



# Friends of Kennet Newsletter

February 2010  
Number 1

## Summary of Meeting held on 6th February 2010 at Cargo Café Foulridge Wharf

### Aims & Objectives of the Meeting

- **What is the Kennet Project?** - to save the heritage shortboat Kennet and develop it as an educational /heritage asset to promote the heritage of the working boats and people on the Leeds & Liverpool Canal.
- **What is the Friends of Kennet?** - Friends of Kennet has been formed by the Leeds & Liverpool Canal Society to help facilitate the Kennet Project. To date has 103 members.
- To create an understanding of the timescale and requirements of the Kennet Project.
- Take the Kennet Project forward by establishing the level of commitment available from Friends of Kennet and Leeds & Liverpool Canal Society members in the three aspects of time, skills and financial – both hard cash and benefits in kind.
- Form a working group to lead the project with designated rolls & tasks including a group co-ordinator

The meeting opened with a short introduction by Mike Clarke and an update by Cris Shave on where we are with the project and details of meetings held with British Waterways. It was noted that after the initial meeting with British Waterways we have made representation to senior BW staff in the North for a free mooring at Greenberfield for Kennet. Mike Clarke spoke about Heritage boats in general followed by a presentation lead by Harold Bond detailing the Grand Plan on how we might achieve the aims and objectives of the Kennet Project.

Following on from the presentation some 12 people put their names against one or two of the 4 areas making up the working group and a follow up meetings will be held in the near future. The L&LCS website will be up dated to include a link to Friends of Kennet along with a blog and twitter !!!!!

After the meeting there was good informal discussion and networking both between old and new faces.

# The Grand Plan

This outlines the overall plan / timescale for the Kennet Project

**2010** – Running Kennet, along with Planning the Refurbishment & Sourcing the Funding

**2011** – Refurbishment & Creating Display Material

**2012** – *Grand Re-launch Programme*

**2013** - Journey to one end of the Leeds & Liverpool Canal with appropriate stops along the way to promote the Working Boat and Canal Heritage through links with Charities & Local Authorities.

**2014** – Journey to the other end of the Canal with the appropriate stops along the way continuing the theme of 2013.

**2015** – Building on the promotion of the Heritage of the Leeds & Liverpool Canal through the history of the working boats and their families.

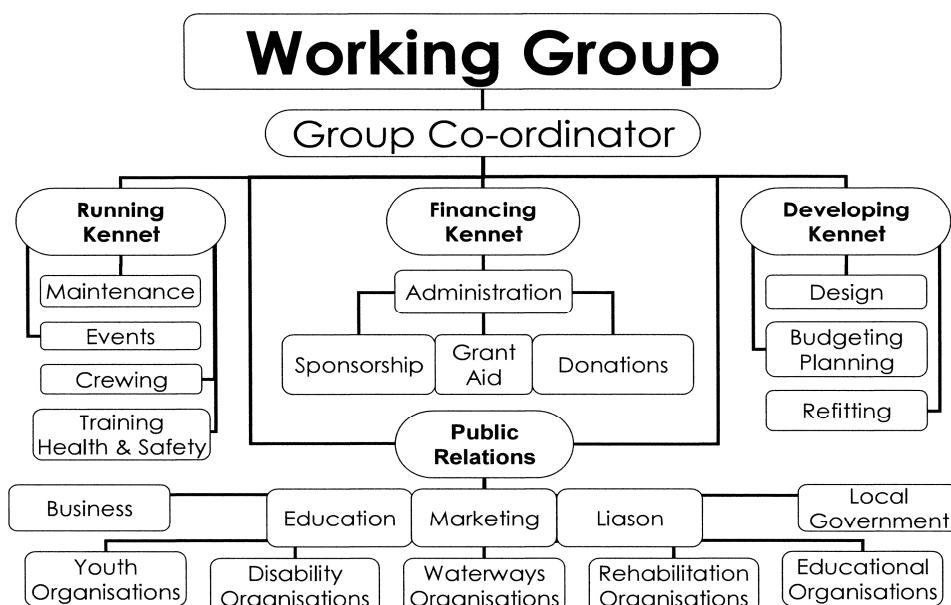
**2016** – *200<sup>th</sup> Anniversary of the Leeds & Liverpool Canal with a Celebration Journey of Kennet from end to end.*

## Formation of a Working Group

It is intended that a **Working Group**, supported by a **raft of volunteers** will **undertake the organisation and promotion of the Kennet Project** and report to the Committee of the Leeds & Liverpool Canal Society.

The **Working Group** will consist of four main sectors – **Running, Financing and Developing Kennet along with Public Relations, to cover all aspects** of the **Kennet Project** with each sector ideally represented by two Friends of Kennet and supported by Friends who are interested in the appropriate areas within each sector. **The following diagram illustrates all the areas which require different skills /help.**

Although at the meeting we had a good response from Friends who are prepared to help we still require more help in all areas, but particularly in relation to the Public Relations and Financing.



**MORE HANDS  
MAKE LIGHT  
WORK!**

**WHAT CAN YOU  
DO TO HELP?**

Please contact us if you can help - [friendsofkennet@btinternet.com](mailto:friendsofkennet@btinternet.com)

or Tel : Harold Bond on 01535 630597

# Donations & Sponsorship

This is an essential part of achieving the initial stages of the Kennet Project as we require to fund the day to day financing of Kennet until such times as we hopefully put the whole scheme onto a firmer foundation with the application for a Lottery Heritage Grant.

- Donations to date following our mail shot amounts to £705 and 13 Friends have indicated that they are interested in sponsoring The Kennet Project.
- We are looking to turn donations into an annual "giving"
- If you haven't donated already and would like to do so please forward your donation (min £10 – cheques made out to Friends of Kennet) to :-

## **Friends of Kennet**

**c/o 2 Cross Lane Mill, Bradley, Keighley, BD20 9QB**

- We have now launched the **Sponsorship Programme** which will be tailored to individual sponsors requirements relative to Goods / Services and / or Money / Good Will using 3 Standards –
  - **Bronze** - Min £100
  - **Silver** - Min £250
  - **Gold** - Min £500
- If you can help with finding and talking to sponsors or require further information about Sponsorship please contact us -  
[friendsofkennet@btinternet.com](mailto:friendsofkennet@btinternet.com)  
or Tel : Harold Bond on 01535 630597
- **Recognition of all those who have donated and become sponsors will be by Name / Company Branding on a Display Panel on Kennet and the Web site from the beginning of each season.**

## Grant Aid

### Lottery Heritage Grant

An initial approach has been made for a Lottery Heritage Grant. This will be for up to £50,000 to cover the main Refurbishment and Promotion of Heritage through Education. British Waterways are to help us with this application and we have already had an initial meeting with them and another is planned for later this month. This is still early days and there is a lot of work to be done this year to plan the requirements / quotations for the refurbishment and educational needs before a full application can be made.

### Charities & Local Authorities

It is also planned, if we can find the appropriate help, to make contact with the Local Authorities and Charities along the full length of the Canal. We would like to create links with the intention of working closely with them to promote The Kennet Project and supply educational information and visits to Kennet. This will also strengthen our Heritage Grant application and also give us an opportunity to apply for specific grants for smaller aspects of the Project.

## **Working Parties / Boat Movements / Events 2010**

**Sat. 20<sup>th</sup> February.** Working party on Kennet at Reedley Marina, Barden Mill, 10.00 onwards.

**Sat. 20<sup>th</sup> March.** Working party on Kennet at Reedley Marina, Barden Mill, 10.00 onwards.

**Sat. 27<sup>th</sup> March.** Move boat from Reedley Marina to Greenberfield Lock mooring.

**Sat. 17<sup>th</sup> April.** Working party on Kennet at Greenberfield Locks 10.00 onwards. If appropriate Kennet should be open to public on this day as well.

**W/C 26<sup>th</sup> April.** Move Kennet from Greenberfield to Skipton for the Skipton Waterways festival on 2 days this week- most likely Thursday 29<sup>th</sup> & Friday 30<sup>th</sup>.

**Sat. 1<sup>st</sup> May to Mon. 3<sup>rd</sup> May** Skipton Waterways Festival. Kennet open to public from 10.00 to 17.00 each day. 5 volunteers required per day to man Kennet.

**W/C 4<sup>th</sup> May.** Move Kennet from Skipton to Greenberfield on 2 days this week – most likely 4<sup>th</sup> & 5<sup>th</sup> May

**Sat. 15 May.** Working party on Kennet at Greenberfield Locks 10.00 onwards. If appropriate boat should be open to public on this day as well.

**W/C 12 June.** Move Kennet from Greenberfield to Clayton/Blackburn. 2day trip

**Sat. 19<sup>th</sup> –Sun. 20<sup>th</sup> June.** 200<sup>th</sup> Anniversary of opening of canal from Clayton to Blackburn.

**W/C 21<sup>st</sup> June.** Move Kennet back from Clayton/Blackburn to Greenberfield. 2 day trip.

**W/C 10<sup>th</sup> July.** Move Kennet from Greenberfield to Leeds

**Sat. 17<sup>th</sup> & Sun. 18<sup>th</sup> July.** Leeds Festival. Volunteers required manning Kennet during festival.

**W/C 19<sup>th</sup> July.** Move Kennet from Leeds to Goole.

**Sat. 24<sup>th</sup> & Sun. 25<sup>th</sup> July.** Heritage boat event to Yorkshire Waterways Museum, Goole.

**August.** Move Kennet back from Goole to Greenberfield

If you would like to help in any way at the working days, or manning Kennet for the moves and / or the events please contact us via - [friendsofkennet@btinternet.com](mailto:friendsofkennet@btinternet.com)

or Tel : Cris Shave on 01535 631975

## **A Big Thank-you**

### **Sponsors –**

#### **GOLD**

Reedley Marina

#### **SILVER**

Worsley Dry Dock Ltd

#### **BRONZE**

Café Cargo  
Marine Surveys Ltd

### **Donations -**

Ms Ruth T Anderson

Mr John Bailey

Henry & Wilma Belshaw

Mr David Blackburn

Harold & Katey Bond

Mr Alan Broadbent

Lynton & Freda Childs

Mr Martin D Cleaver

Stephen & Gillian Cookson

Mr David Cox

Eric & Anne Croasdale

Mr Peter A Duckworth

Mr John Farmery

John & Marilyn Freear

Mr John S Gavan

Mr John I Hacking

Ken & Margaret Hammond

Mr Maurice Hickson

Mr Neil Highfield

Mr Walter Holden

Mr Michael F Leonard

Mr Roger Lorenz

Mr David Lowe

Francis & Barbara McMahon

Mr Bryan McMillan

Terry & Margaret Pound

Michael & Hilary Procter

Carey & Thresa Saunders

Mr David Schofield

David & Isobel Shuttleworth

David & Audrey Smith

Mr Geoff Wheat

Wheulton Boat Club

Sam & Edward Yates

Mr Richard Young

**Partner - British Waterways**